



The Mouth & Esophagus

Here you collect chewing, tongue and saliva tokens when you land on a field that looks like a token. You must have 2 in total. In case you land on a field and already have 2 tokens then you should not collect any more.



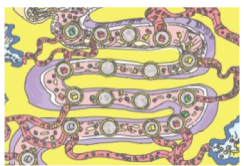
The Stomach

Here you pick up pounding tokens when you fall on a field that looks like a pounding token. You must have 2 tokens in total. If you land on a field and already have 2 pounding tokens, then you should not collect any more.

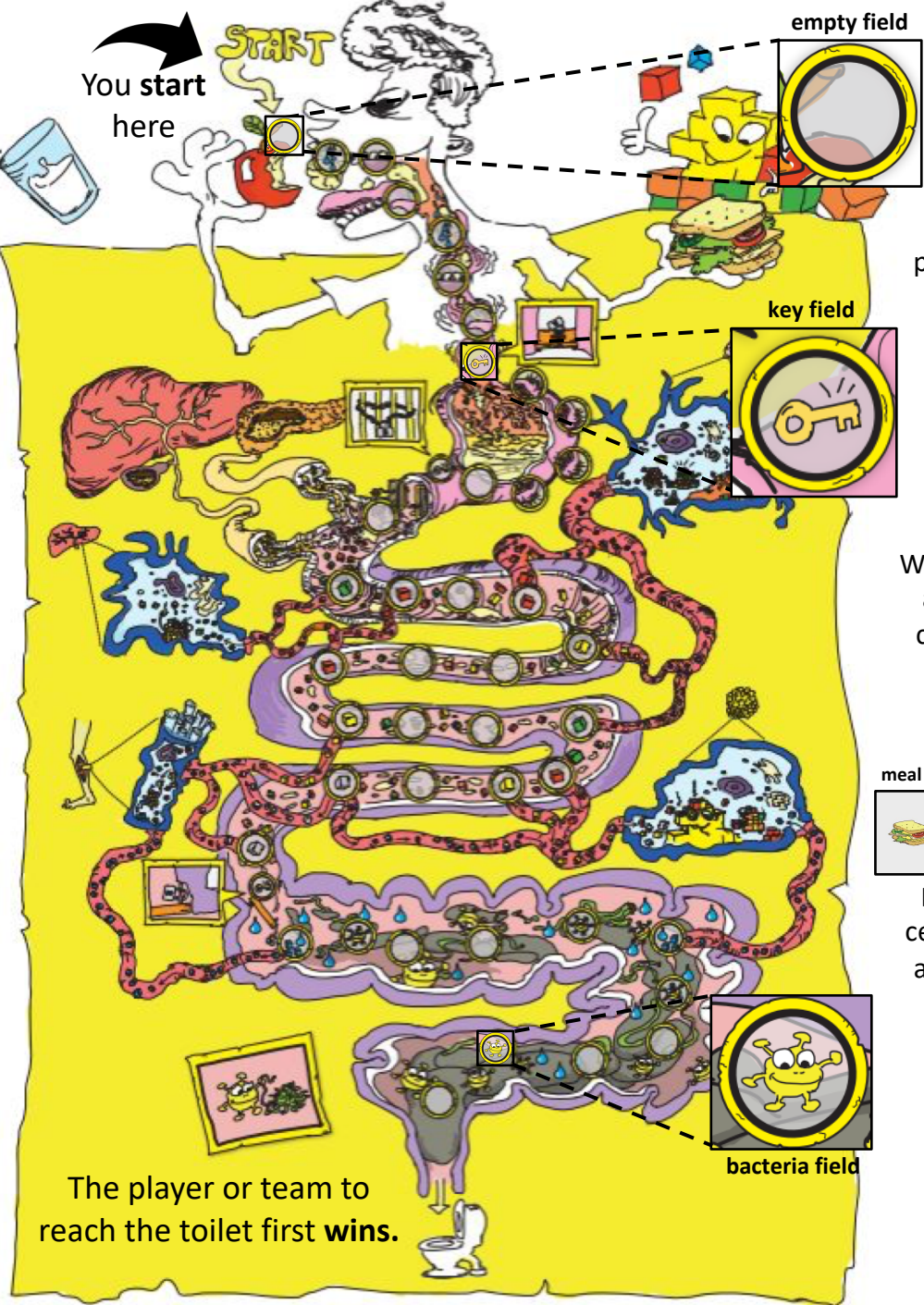


Small Intestine

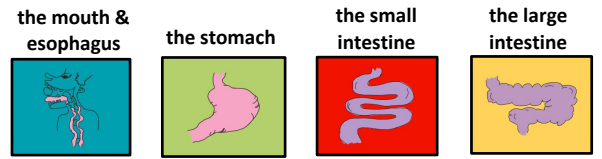
Here you deliver your building blocks to the cells when you land on a field with a building block. You should deliver a building block of the corresponding color to the connected cell. If you land on a field with gray building block you can deliver any building block to the cells.



You start here



The player or team to reach the toilet first wins.



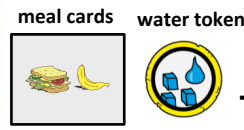
Info cards

You can play with or without info cards! If you are playing with info cards the team must read an info card out loud each time one lands on an **empty field**.



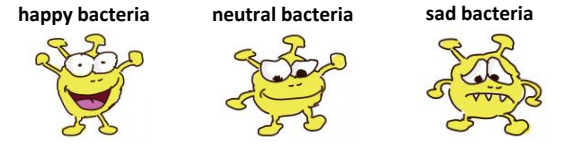
Checkpoint cards

When you land on, or pass a **key field**, you have reached a checkpoint. Here you must read the corresponding checkpoint card out loud which tells you whether you can continue or if must go back!



The Large Intestine

In the large intestine you deliver your water to the cells as you pass a field with water. When you land in a **bacteria field** you must take a meal card, flip over the card and there will be 3 options.



Throw the dice and move **forward** the corresponding number of fields.
 Stay put.
 Throw the dice and move **back** the corresponding number of fields.