

Winner or Loser

The game ends when all the cards in the draw pile are taken. Players will continue playing for ONE LAST ROUND.

The player stuck with the Bad BOSS card is the loser. His / her pairs won't count!

The player with the most pairs is the winner.

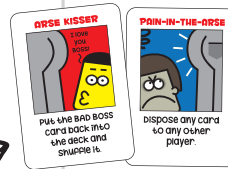


Notes & tips

You can take a discarded character card from the previous player but NOT a discarded Arse card.

Take note of discarded character cards to help you form your pairs.

Arse kisser and pain-in-the-arse cards are very important to get rid of the Bad BOSS card (use wisely!)



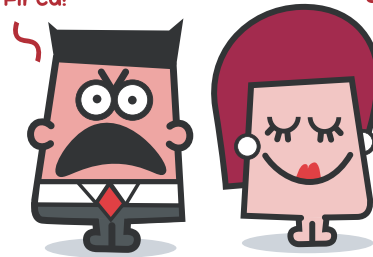
Discarding all the character cards and hoarding Arse cards will lower your chances of gaining more pairs.

You can combine 2 Bad BOSS card games or even our first bad boss deck so that more pairs can be formed to support more than 6 players.

BAD BOSS 2

you're fired!

you sure?



Game Rules

Intro

There are 3 types of cards:

Arse cards
(red header ones)
actions that you can play



character cards
you form pairs with them

Bad BOSS card
you must not get stuck with it



Objective

The goal is to collect as many pairs as possible while avoiding the Bad BOSS card by using Arse cards to your advantage.

Setup

Mix all the cards and shuffle deck. A dealer gives to each player:

9 cards for 2 players
7 cards for 3 - 4 players
5 cards for 5 - 6 players



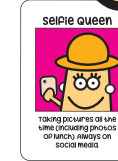
Place remaining cards in a draw pile faced down.

Player on the dealer's left starts.

Play

Each player does 2 things at his/her turn:

1) **TAKE** a card either from the draw pile or the last discarded character card.



2) **PLAY** an Arse card, discard a character card or form a pair.

There are 2 discard piles: character card pile and Arse card pile.

